



Republic of the Philippines
TARLAC STATE UNIVERSITY
BIDS AND AWARDS COMMITTEE
Romulo Blvd., San Vicente, Tarlac City
Tel. No.: (045) 982-4630
Website: www.tsu.edu.ph

October 17, 2024

SUPPLEMENTAL BID BULLETIN NO. 1

Project: Renovation of Faculty Lounge at TSU Canteen

This Bid Bulletin no. 1 is issued to clarify items and shall be an integral part of the Bidding Documents.

Please be informed of the modification in the bidding documents.

ATTY. WILMARK J. RAMOS, DBA
Chairperson – Infrastructures

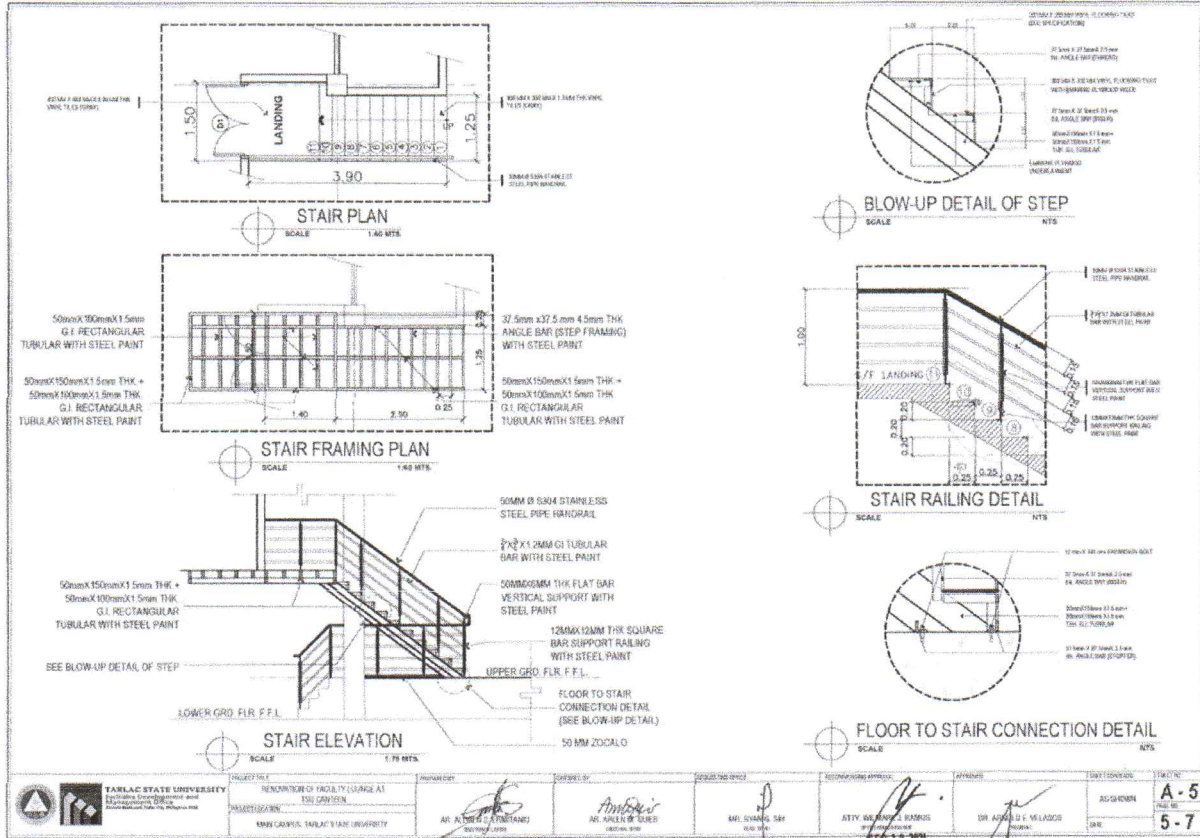


POSTED TO PHILGEPS		MODIFICATION	
Section III. Bid Data Sheet		Section III. Bid Data Sheet	
ITB Clause		ITB Clause	
5.2	For this purpose, contracts similar to the Project refer to contracts for the Installation of Automatic Fire Sprinkler System of a Building at least five-storey high.	5.2	For this purpose, contracts similar to the Project refer to contracts for the Construction of at least two-storey high building.

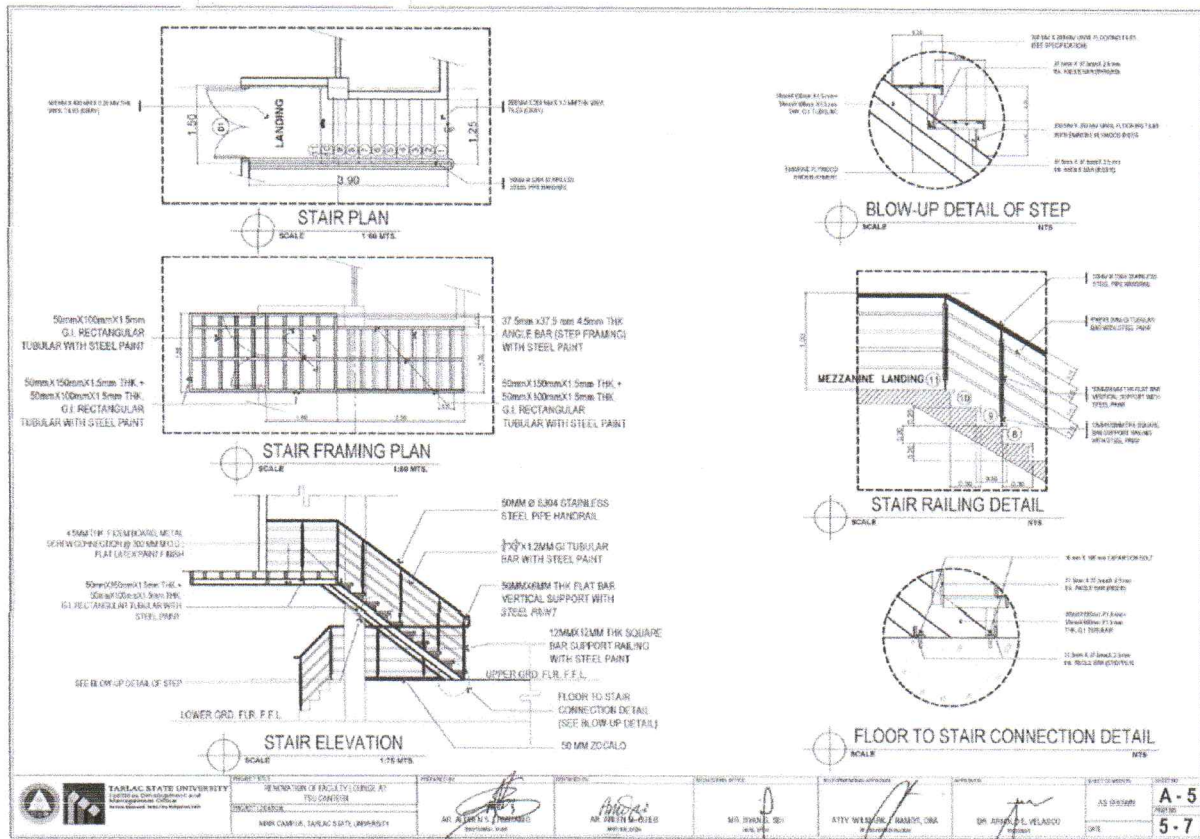


Republic of the Philippines
TARLAC STATE UNIVERSITY
BIDS AND AWARDS COMMITTEE
 Romulo Blvd., San Vicente, Tarlac City
 Tel. No.: (045) 982-4630
 Website: www.tsu.edu.ph

PREVIOUS LAYOUT



UPDATED LAYOUT



RENOVATION OF FACULTY LOUNGE AT TSU CANTEEN

POSTED ON PHILGEPS

3.5.2.1 Glass Door: 12mm Thick Tempered Glass with frosted decals double panel swing frameless double glass door with closer and S304 stainless 35mm Ø H-Type door handle and complete accessories.

MODIFICATION

3.5.3.1 Glass Door: 10mm Thick Tempered Glass with frosted decals double panel swing frameless double glass door with closer and S304 stainless 35mm Ø H-Type door handle and complete accessories.

POSTED ON PHILGEPS

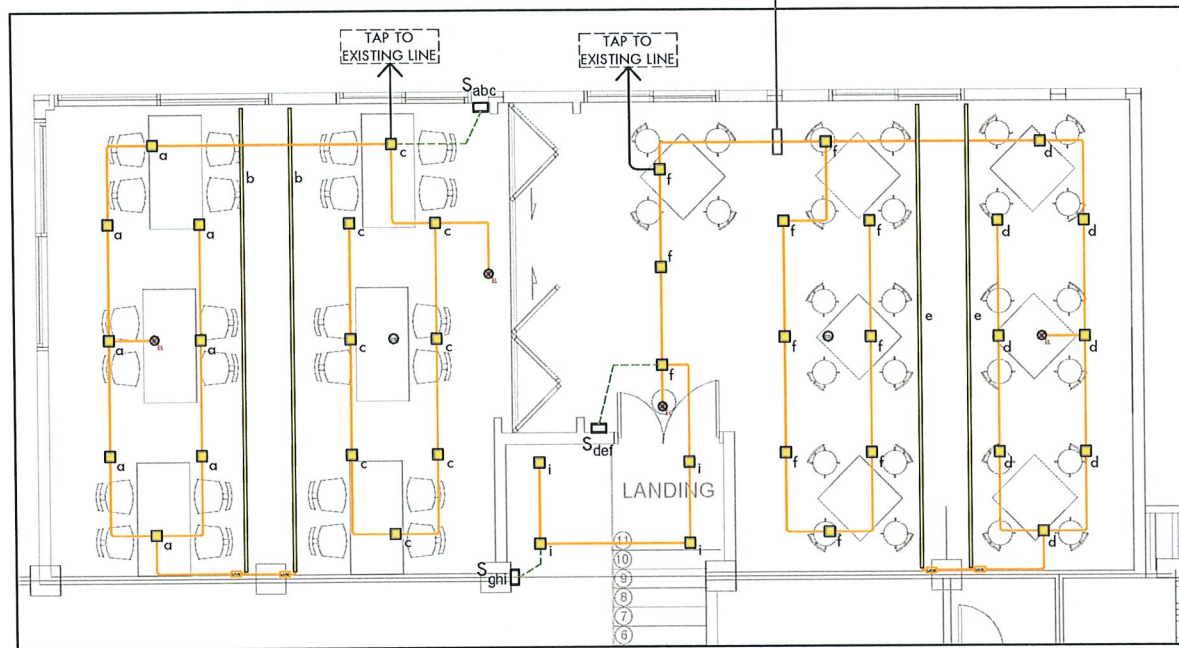
4.4.2.1 Wiring shall be done in PVC Pipe for embedded and in RSC or EMT for run exposed; it shall be Schedule 40.

MODIFICATION

4.4.2.1 Wiring shall be done in PVC Pipe for embedded and in RSC or EMT for run exposed; it shall be Schedule 40. Conduit sizes shall conform to the dimensions specified in the plans. Any deviations from these sizes require prior approval from the project engineer.

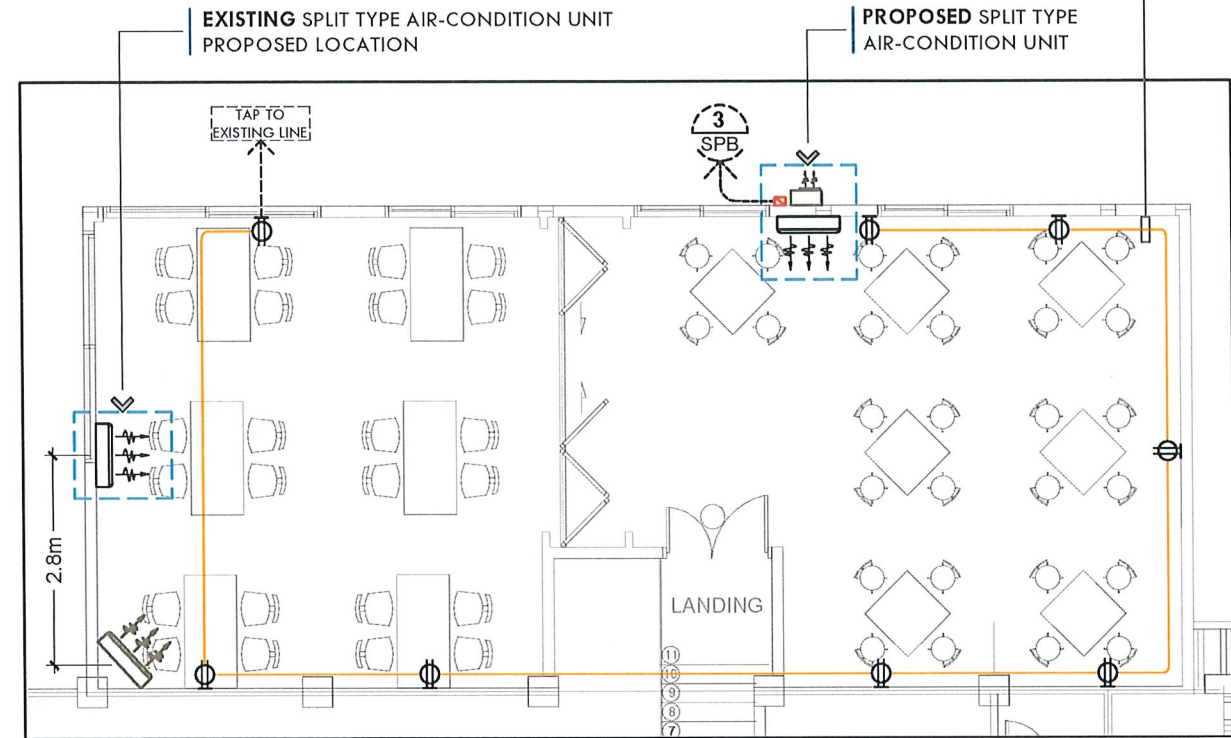


3.5mm² THHN/THWN Cu. WIRE IN A
1/2" dia. PVC CONDUIT



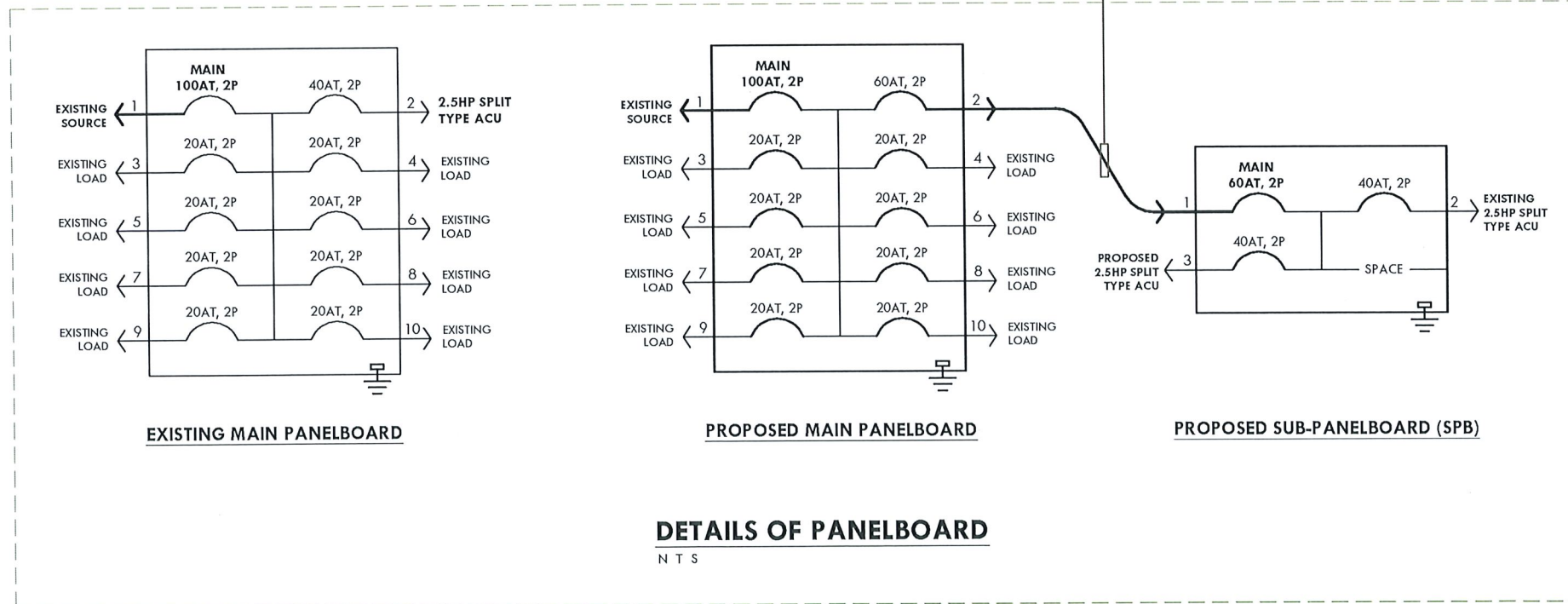
PROPOSED LIGHTING LAYOUT
SCALE: 1:100 MTS

3.5mm² THHN/THWN Cu. WIRE IN A
1/2" dia. PVC CONDUIT



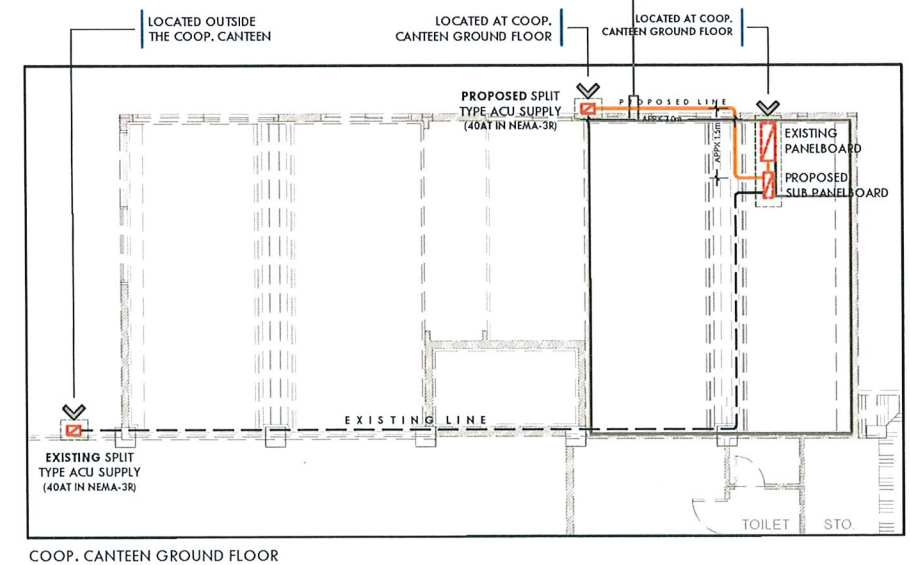
PROPOSED POWER LAYOUT
SCALE: 1:100 MTS

14mm² THHN/THWN Cu. WIRE IN A
1" dia. PVC CONDUIT
APPX. LENGTH: 1m



DETAILS OF PANELBOARD
N T S

5.5mm² THHN/THWN Cu. WIRE IN A
1/2" dia. PVC CONDUIT



PANELBOARDS LOCATION & FEEDER LINE LAYOUT
N T S